

TARGETTI

ZENO MEDIUM APPLIQUE

Wall Mount Indirect Sconce

Concept: Wall mount indirect sconce with asymmetric distribution.

Materials: Die-cast painted aluminum optical unit and power supply box. The optical unit can be adjusted from 0 to -90° on the vertical plane; and 355° on the horizontal plane with aiming locking system.

Optic: Highly reflective pre-anodized aluminum optic Wall washer optical system comprised of a PMMA holographic filter and painted plastic black screen.

Source: High efficiency LED Chip on Board.

Installation: Surface mounted over recessed J-box. Fixture is supplied with a universal adaptor plate to mount over 4"x4" J-box.

Finish: Plaster White / Deep Black

Driver: Integrated 4/1 driver (Non-dimmable / 0-10V / Reverse Phase / Forward Phase)

Wattage: 28W

Color Temperature: 2700K / 3000K / 3500K / 4000K

CRI: +97Ra

Delivered Lumens: 3000K 4000K

Asymmetric 34° x 54° = 1448Lm 1496Lm

Lumen Maintenance (L70): 50,000hrs

Calculation for LED fixtures are based on measurements that comply with IES LM-80.

Voltage: Universal Voltage 120-277V AC 50/60Hz

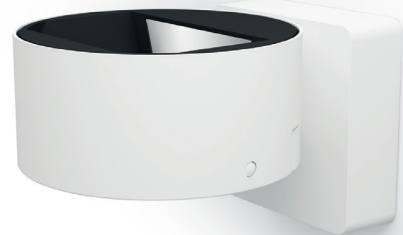
IP Rating: IP40

Certifications: cULus Listed

Tested in accordance with LM-79-08

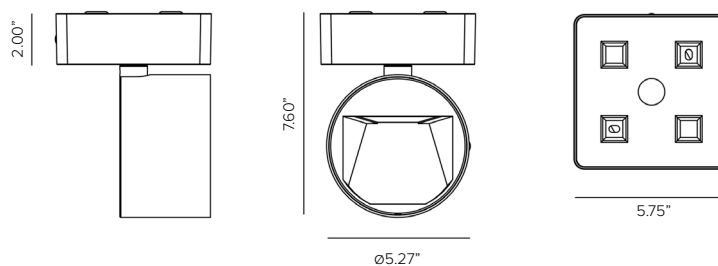
Energy efficient for California installations.

Warranty: 5 year limited warranty



PRODUCT CODE	DRIVER	FINISH	OPTICS	WATTAGE	COLOR TEMP
ZEA — ZENO Medium Applique	41 — 4/1 Dimming (Non-Dimming / 0-10V / Reverse Phase / Forward Phase)	PW — Plaster White DB — Deep Black	AS — Asymmetric 34° x 54°	L1 — 28W	27 — 2700K 30 — 3000K 35 — 3500K 40 — 4000K

Views



TARGETTI

ZENO MEDIUM APPLIQUE

Photometry

		3000K		H(m) D1(m) D2(m) Emax(lx)			
		Ra97		34°	54°		
	Fixture Power	28W	1	1.06	1.18	1345	
	Source Flux	2602lm	2	2.11	2.35	336	
	Fixture Flux	1473lm	3	3.17	3.53	149	
	Efficacy	53lm/W	4	4.23	4.71	84	
	TS979	Imax=745cd/klm	Imax	1939cd	5	5.28	5.89

		4000K		H(m) D1(m) D2(m) Emax(lx)			
		Ra97		34°	54°		
	Fixture Power	28W	1	1.06	1.18	1389	
	Source Flux	2688lm	2	2.11	2.35	347	
	Fixture Flux	1521lm	3	3.17	3.53	154	
	Efficacy	54lm/W	4	4.23	4.71	87	
	TS979	Imax=745cd/klm	Imax	2003cd	5	5.28	5.89