

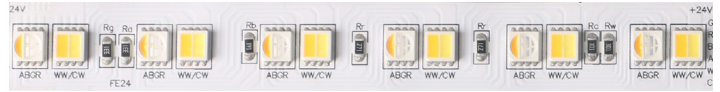


a brand of TARGETTI

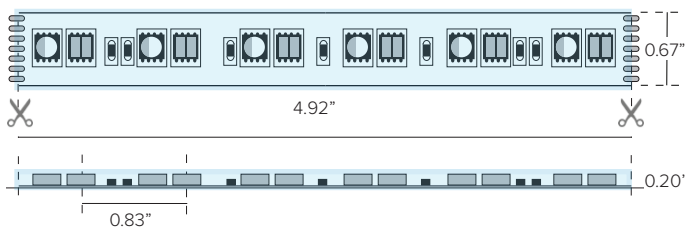
DURATAPE™ EXTREME TUNABLE IP65 OUTDOOR

KEY FEATURES

- Color changing strip with both full spectrum RGBA and tunable white CCT all combined in one linear strip!
- DURATAPE EXTREME TUNABLE gives the designer the freedom to choose previously unthinkable shades of light without using complex electronic equipment and create the most diverse and new, pleasant and amazing lighting scenes using just one strip.
- Sold per foot and manufactured to specified lengths with factory attached end preps.
- Features 6-circuit substrate for optimum heat dissipation, minimizing voltage drop while increasing run lengths per power feed, standardizing electrical flow over entire length of the strip for maximum product reliability.
- Pre-assembled to specific lengths with various connector options for project requirements and efficient power configuration.
- Max continuous length: up to 12' per run
- Multiple DMX512 drivers options available.



DIMENSIONAL DRAWINGS



DETAILS

Spacing	0.83" OC LED Spacing Paired LED Spacing
LEDs	29 LEDs per foot arranged as pairs of multi-colored sets
Wattage	6.9W/ft
Color Temp	RGBA (Red 630nm / Green 520nm / Blue 460nm / 1600°K Amber) and Tunable CCT 3000°K-6500°K
Color Consistency	Bin centered on the Planck curve with a 2 step MacAdam tolerance.
End Preps	Factory prepped end preps available (See Page 2)
Mounting	Includes installation-ready 3M tape adhesive for simplified installation directly to mounting channel or application surface
Installation	Optional aluminum channels with base and cover can be used to install decorative, protective covers
Power Supply	Listed Class 2 output, 24V DC power supply required
Listing	cULus Class 2 Listed E471161 Tested in accordance with LM-79-08
Compliance	ROHS compliant MRI Safe, driver to be mounted outside of MRI room. To be use with plastic or aluminum profiles only. To be installed with adhesive or MRI safe hardware only, no factory provided mounting hardware to be used.
Warranty	5 year warranty

FIXTURE DATA

Model	Efficacy Lm/Ft Lm/Wt	Wt/Ft	Wt/Ft
Extreme Tunable CCT	55	381	6.9

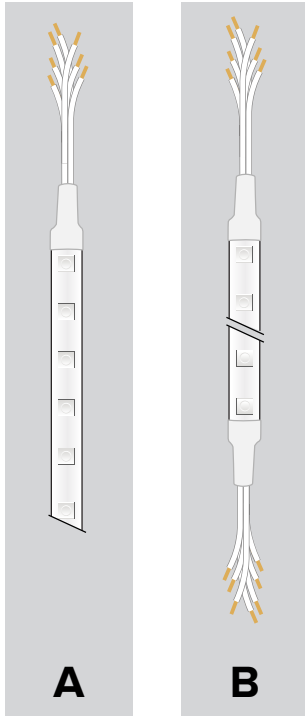
LED DATA

Model	Wt/LED	Viewing Angle	Lifespan at 90% drive
Extreme Tunable CCT	0.24	120°	40,000hrs

* LEDs operating at 90% of LED manufacturers maximum current rating.

PRODUCT CODE	TYPE	WATTAGE	IP RATING	LED COLOR	VOLTAGE	+	END PREP	+	MOUNTING	+	POWER SUPPLY
DL—Duratape™	ET — Extreme Tunable CCT	69 — 6.9 W/ft	O — Outdoor IP65	6C — RGBA (Red 630nm / Green 520nm / Blue 460nm / 1600°K Amber) and CCT Tunable 3000°K–6500°K	24 — 24 VDC						

END PREPS AND CONNECTORS (REQUIRED) - Choose 1



REQUIRED END PREPS:

(One required for each run of tape)

A

07UX6CBL1 (6-circuit RGBA+CCT)

Factory attached single 6 circuit lead wire prep. 24" seven conductor Lead wire/dead end allows for connection to power at lead end and field trim of Duratape product at the other end.

07UX6ADDCBL: ADDITIONAL LEAD WIRE (6-circuit RGBA+CCT)

Additional lead wire purchased per foot and factory attached to specified run leads. Lead wire can be field cut to desired length.

B

07UX6CBL2 (6-circuit RGBA+CCT)

Factory attached double ended 6 circuit lead wire prep. 24" seven conductor lead wire at both ends. One end can be used for power connectivity while the other end can be used for interconnection to run to an additional length of Duratape.

07UX6ADDCBL: ADDITIONAL LEAD WIRE (6-circuit RGBA+CCT)

Additional lead wire purchased per foot and factory attached to specified run leads. Lead wire can be field cut to desired length.

PROFILE OPACITY LEVEL KEY:



Uniform
Direct View



Blended
Direct / Indirect View



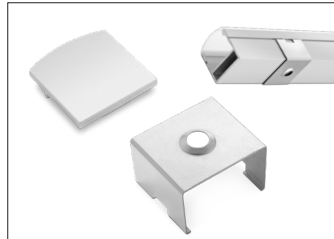
Pixelated
Indirect View

SURFACE PROFILE



PRAP-U

Surface mount aluminum profile. Anodized aluminum rigid profile complete with opal translucent diffuser cover. Available in 79in (2M) lengths.



KTRAP-UEC

5 + 5 silver color end caps

KTRU-CL

5 sets of clips

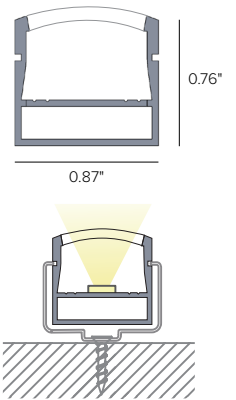


OR-DEV

Set of steel supports required with use of KTORDEV-U.

KTORDEV-U

Set of aluminum mounting heads required with use of OR-DEV.



Power Supply (REQUIRED)	Type	Wattage	Input/Output Voltage	Dimmable	IP Rating	Output	Dimensions
DEDDX961246CDMX	ELECTRONIC DRIVER WITH 6 CHANNEL ADDRESSABLE INTERFACE ASSEMBLY	96W	120-277V / 24V	DMX CONTROL 6 CHANNEL	NEMA3R ENCLOSURE	UL CLASS 2	12" x 12" x 4" ¹
DEDDX1802246CDMX	ELECTRONIC DRIVER WITH 6 CHANNEL ADDRESSABLE INTERFACE ASSEMBLY	2X96W	120-277V / 24V	DMX CONTROL 6 CHANNEL	NEMA3R ENCLOSURE	UL CLASS 2	12" x 12" x 4" ¹

¹ Dimensions include enclosure with mounting bracket.

* Constant voltage drivers 50/60HZ, voltage regulated with short circuit protection. Operating temperature -40 C- 80° C

* Installation of power supply must be compliant to Class 2 installation standards. Refer to NEC and local building code requirements.

MAXIMUM INTERCONNECTED TAPE LENGTH PER DRIVER

Fixture Wattage	Driver Wattage	
	96W	2X96W
6.9W/ft	11FT	(2) 11FT

Controller (Optional)	Type	Application	Voltage	Listing	Dimensions	# Ouput Channels	Number of Zones	Number of Scenes
TGDMXSLES AU9	Stand-alone DMX Programmable Controller with Easy to Use Software Interface	Indoor Only	5.5V/DC	ETL, UL	5.3"W x 5.5"H x 1.9D	256	1	20



TGDMXSLES AU9



a brand of TARGETTI

DURATAPE™ EXTREME TUNABLE

IP65 OUTDOOR

PHOTOMETRY

DURATAPE ET		POLAR GRAPH
Fixture Power	6.9W	
Fixture Output	381Lm	
Kelvin Temp	RGBA	
Beam Spread	120°	
IMax	317cd/klm	
Efficacy	55.2 Lm/W	