

# TARGETTI

## OMEGA SUSPENSION

### Suspended LED Ceiling Fixture

**Concept:** Stand alone linear LED fixtures for suspension installation for functional decorative lighting.

**Materials:** Painted extruded aluminum body and optical unit. Opal polycarbonate lens.

**Diffuser:** Opal diffuser providing soft and enveloping light emission, capable of giving character to surroundings with a warm and efficient glow.

**Mounting:** Complete with canopy in matte white finish and (2) 20ft stainless steel suspension cables with grip lock and one clear five conductor power/dimming cable.

**Optic:** White painted steel symmetric reflector. High luminance transmission and light diffusion opaline polycarbonate diffusive lens.

**Source:** Linear LED boards.

**Installation:** Fixture to be installed according to local building codes by a certified electrician.

**Finish:** Plaster White / Deep Black / Silver / Ferrite Grey

**Driver:** Integrated 4/1 driver (Non-dimmable / 0-10V / Reverse Phase / Forward Phase).

**Color Temperature:** 2700°K / 3000°K / 3500°K / 4000°K

**Wattage:** 36W

**CRI:** Ra90

**Delivered Lumens:** 3000°K

2700°K = 2353Lm

3000°K = 2371Lm

3500°K = 2401Lm

4000°K = 2432Lm

**Lumen Maintenance (L70):** 50,000hrs

*Calculation for LED fixtures are based on measurements that comply with IES LM-80.*

**Voltage:** 120-277V AC 50/60Hz

**IP:** IP20

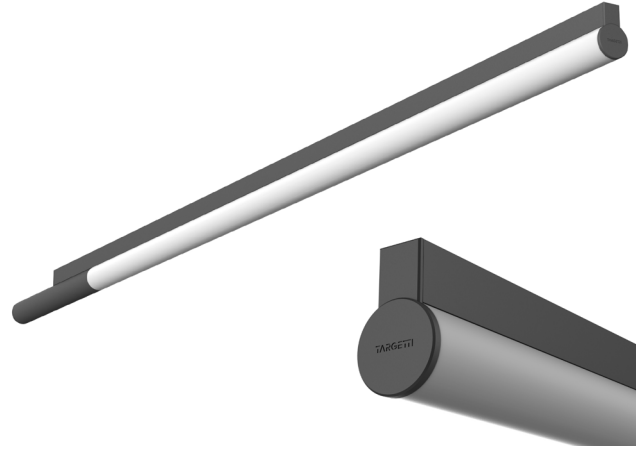
**Certifications:** cULus Listed

Tested in accordance with LM-79-08

Energy efficient for California installations.

**Warranty:** 5 year limited warranty

Designed in collaboration with Gensler as Product Design Consultant

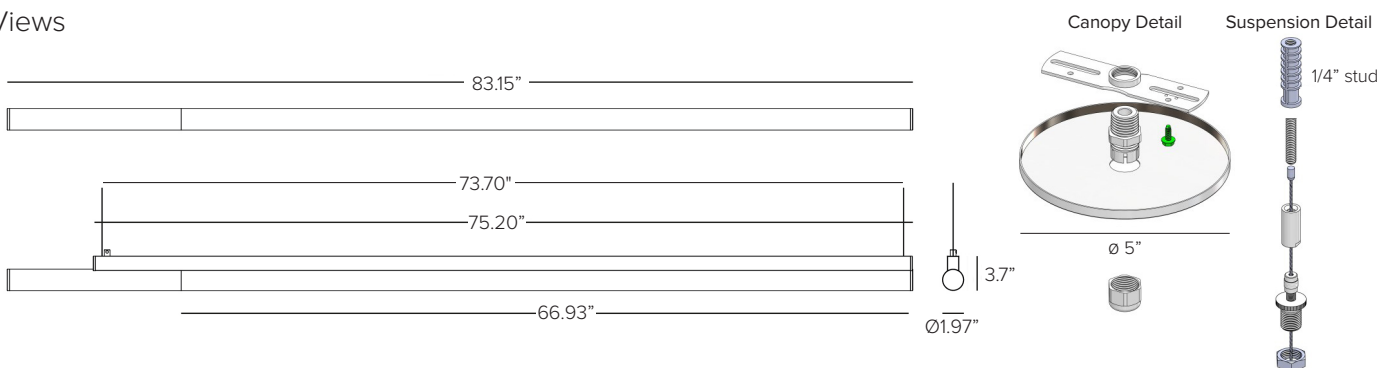


Shown in Ferrite Grey finish



PRODUCT CODE	TYPE	LENGTH	DRIVER	EMISSION	DIFFUSER	FINISH	COLOR TEMP
OM — OMEGA	SU — Suspension	83 — 83.15" L	41 — 4/1 Dimming (Non-Dimming / 0-10V / Reverse Phase / Forward Phase)	DN — Direct	O — Opal	PW — Plaster White DB — Deep Black SI — Silver FE — Ferrite Grey	27 — 2700K 30 — 3000K 35 — 3500K 40 — 4000K

### Views



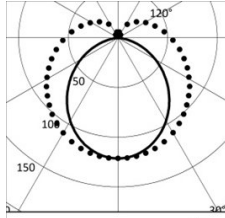
# TARGETTI

## OMEGA SUSPENSION

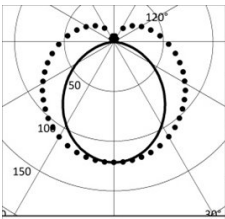
### Photometry



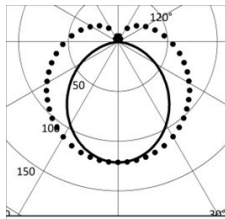
		2700K	H(m)	D1(m)	D2(m)	E <sub>max</sub> (lx)	
		Ra90		102°	164°		
Fixture Power		27W	1	2.45	14.31	522	
Source Flux		4314lm	2	4.90	28.63	131	
Fixture Flux		2353lm	3	7.35	42.94	58	
Efficacy		88lm/W	4	9.80	57.25	33	
TS1199	I <sub>max</sub> =121cd/klm	I <sub>max</sub>	5	12.25	71.57	21	



		3000K	H(m)	D1(m)	D2(m)	E <sub>max</sub> (lx)	
		Ra90		102°	164°		
Fixture Power		27W	1	2.45	14.31	526	
Source Flux		4347lm	2	4.90	28.63	132	
Fixture Flux		2371lm	3	7.35	42.94	58	
Efficacy		88lm/W	4	9.80	57.25	33	
TS1199	I <sub>max</sub> =121cd/klm	I <sub>max</sub>	5	12.25	71.57	21	



		3500K	H(m)	D1(m)	D2(m)	E <sub>max</sub> (lx)	
		Ra90		102°	164°		
Fixture Power		27W	1	2.45	14.31	533	
Source Flux		4403lm	2	4.90	28.63	133	
Fixture Flux		2401lm	3	7.35	42.94	59	
Efficacy		90lm/W	4	9.80	57.25	33	
TS1199	I <sub>max</sub> =121cd/klm	I <sub>max</sub>	5	12.25	71.57	21	



		4000K	H(m)	D1(m)	D2(m)	E <sub>max</sub> (lx)	
		Ra90		102°	164°		
Fixture Power		27W	1	2.45	14.31	540	
Source Flux		4459lm	2	4.90	28.63	135	
Fixture Flux		2431lm	3	7.35	42.94	60	
Efficacy		91lm/W	4	9.80	57.25	34	
TS1199	I <sub>max</sub> =121cd/klm	I <sub>max</sub>	5	12.25	71.57	22	