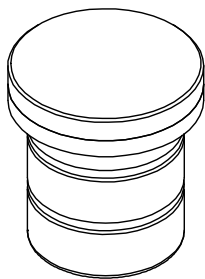




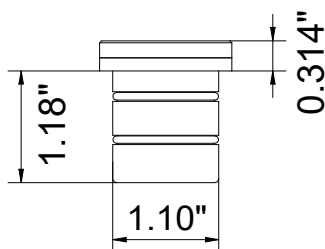
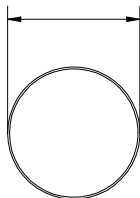
SATURN MINI INSTALLATION GUIDE

Saturn Mini Wide Flood (WF)

Product code: SAMRP-



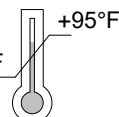
∅ 1.38"



IP67



-13°F



+95°F

K 5 FB-B;

Remote Class II electronic power supply will power the fixture with low voltage. DO NOT CONNECT FIXTURE WITH LINE VOLTAGE. FAILURE TO COMPLY WILL RESULT IN VOID OF WARRANTY.

To ensure a maximum efficient use of the product, read the instructions before proceeding installment.



This fixture must be installed by a licensed and qualified electrician. The installer must comply with NEC and local building codes when installing the fixture



Electrical current can cause painful shock, serious injury, or even death. Make sure you turn off the power supply, ground fixture(s), and make sure all electrical connections are correct and secured



This fixture must not be installed during rain, fog, or high humidity



For use in IP67 installations.



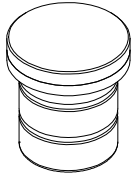
Keep the label of the original packaging if any eventual future claims are needed

Table of Contents

Packaging Contents	Pg.2
Fixture Wiring Layout	Pg.2
Fixture Installation	Pg.3
Maintenance	Pg.4
Support Page	Pg.4

Packaging contents

SATURN MINI
Fixture



IP 67 Watertight
connectors (2 pcs)



Fixture Wiring Layout

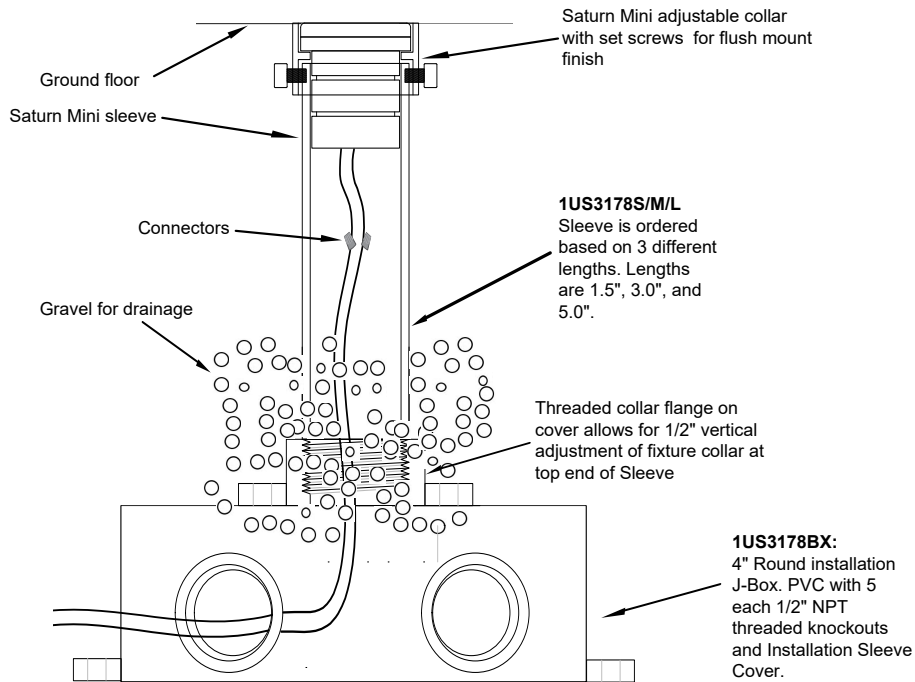
Installer will wire the Saturn mini fixture(s) with the daisy chain connection as shown in the diagram below. Be sure that wiring done by the qualified electrical installer must comply with NEC and local building code when installing. Provided wiring for the fixtures must be UL listed, direct burial, weatherproof cable that is properly sized based on the amount of fixtures, lengths of wiring, and compliance of NEC regulations.



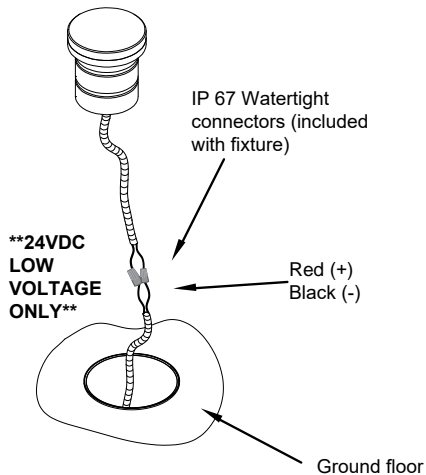
In-grade Fixure Installation

- 1) Installers will dig out trenches for preparation of the Saturn Mini sleeve(s)
 - a) Put gravel in the trenches for proper drainage. Drainage system needs to only allow water to sit inside the trench for a **maximum of 45 minutes**.
 - b) Place the installation sleeve set in trench's designated area. Installer must make sure that the base of the sleeve is leveled and set before placing the fixture(s) inside the sleeve. Be sure the direct burial cable which powers up the fixture will not affect the leveling of the sleeve.
 - c) Depending on how the installer wants to wire the fixture(s), installer needs to run the 18/2 weatherproof direct burial cable connected from the driver to the sleeve with 2-3 inches of wire slack for accessibility of wire connection.
- 2) Once wire is through the sleeve, installer will connect the direct burial cable with the fixture
 - a) Installer will connect the direct burial cable with the fixture's cable with waterproof wire nuts connector provided with the fixture. Be sure to match the correct color coated wire with the wire's polarities to ensure correct powering of fixture. **FIXTURE IS POWERED WITH 24VDC LOW VOLTAGE, DO NOT CONNECT FIXTURE TO LINE VOLTAGE. AN IMPROPER CONNECTION WILL CAUSE THE FIXTURE TO BE DAMAGED AND WILL VOID WARRANTY OF THE FIXTURE.**
- 3) Once connected, set fixture inside the sleeve.

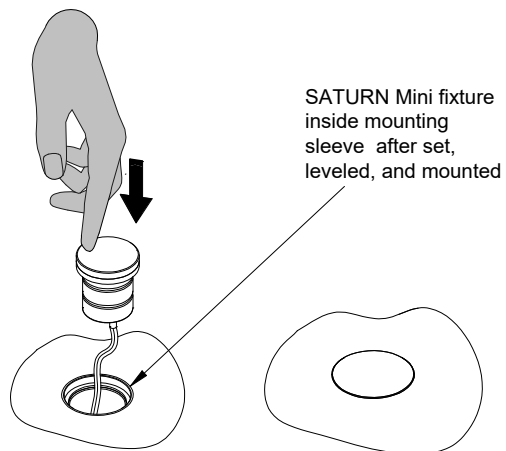
1)



2)



3)



Maintenance

- This fixture was designed and manufactured for a durable, long lasting use with minimum care. We encourage our customer to periodically perform a visual inspection of dirt, abnormalities, or signs of moisture inside. If there are any visible sign of moisture/debris inside the fixture please call back the manufacturer for a return material inspection of goods.

Support

Any questions, problems, or comments you have please feel free to contact our Customer Service department during our business hours Monday-Friday 8am-5pm via:

Email: usaorders@targett.com

Phone: (714) 513-1991

Visit our website: <http://www.targetti.us>

TARGETTI™