



# BALL STRAND CABLE LIGHT

## Key Features

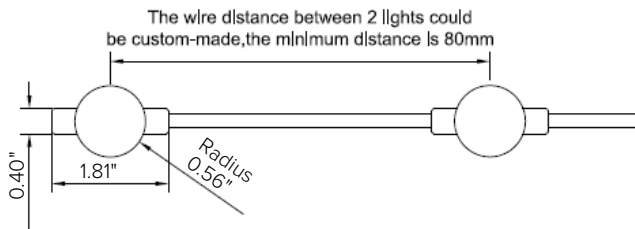
- Perfect for festoon mounting, taught or swayed.
- IP65 rated solid thermoplastic UV resistant rubber housing is water and dust-proof.
- Available in 2300°K static warm white or addressable full color 24Bit RGB, individually addressable lights for dramatic full color lighting effects.
- Lamp spacing available in 6" OC and 12" OC.
- 360° viewing angle (on horizontal plane).
- Max continuous length: 50' max per run (6" OC)
- 100' max per run (12" OC)
- Multiple dimming options available, see power supply selections.

## Low voltage cable light

Low voltage dual circuit cable light available in various spacing. Strand is capable of static Warm White or RGB. For indoor and outdoor lighting applications.



## Dimensional Drawings



## Details

<b>Spacing</b>	6" or 12" OC Socket Spacing
<b>Color Temp</b>	Available in 2300°K and RGB
<b>Wattage</b>	1.1W per socket
<b>Installation</b>	Attach to aircraft cable provided by others and to be secured with zip ties.
<b>Power Supply</b>	Listed Class II 24 VDC power supply required
<b>IP Rating</b>	IP65
<b>Certifications</b>	cETLus Wet Listed 4007019
<b>Warranty</b>	3 year warranty

## Ordering Guide

PRODUCT CODE	TYPE	COLOR TEMP	SOCKET SPACING	VOLTAGE	+	POWER SUPPLY
BS — Ball String	CL — Cable Light	WW — 2300K	06 — 6" OC	24 — 24VDC		
		FC <sup>1</sup> — Full color RGB	12 — 12" OC			

<sup>1</sup>For use with electronic non-dimming driver only.

## Mounting Accessories (Optional)



### DLD-LS-WRAP

1/2" Diameter black spiral cable wrap for use with aircraft cable. To encase aircraft cable and DuraLED Light Cable for a clean 1 wire look, sold per foot.

## Power Supplies (for white WW option only)

Product Code	Type	Wattage	Voltage	Dimmable	Listing	Dimensions
<b>DEL-X-120-1-4-24</b>	Electronic	96W / 1X4A**	90-305V AC / 24V DC	Non Dimmable	cULus	12"W X 12"L 4"D*
<b>DEL-X-240-2-4-24</b>		192W / 2X4A**				
<b>DEL-X-320-3-4-24</b>		288W / 3x4A**				
<b>DEL-120-1-4-24</b>		96W / 1X4A**				
<b>DEL-X-120-1-4-24-D</b>		96W / 1X4A**		Integral 0-10V Dimming Interface	cULus	12"W X 12"L 4"D*
<b>DEL-X-240-2-4-24-D</b>		192W / 2X4A**				
<b>DEL-X-320-3-4-24-D</b>		288W / 3x4A**				

\* Dimensions include enclosure with mounting bracket

\*\* 4A maximum current protection for each secondary circuit

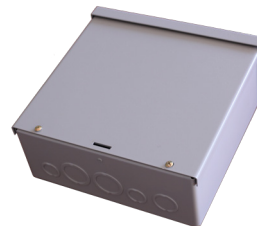
\*\*\* Constant voltage drivers 50HZ , voltage regulated with short circuit protection. operating temperature -40 C- 80° C

### Electronic Drivers

For use with 0-10V interface (DLD-1-10) for secondary side dimming control. Generally used for programmable dimming levels for changing scenarios.



Electronic Driver



Electronic Driver Enclosure

## Power Supplies (for RGB option only)

Product Code	Type	Wattage	Voltage	Dimmable	Listing	Dimensions
<b>DEL-X-120-1-4-24-RGB</b>	Electronic Power Supply with RGB Interface in NEMA3R Enclosure	96W / 1X4A**	90-305V AC / 24V DC	Non-Dimmable	cULus	10"W X 10"L 4"D*
<b>DEL-X-240-2-4-24-RGB</b>		192W / 2X4A**				
<b>DEL-X-320-3-4-24-RGB</b>		288W / 3x4A**				
<b>DEL-X-120-1-4-24<sup>1</sup></b>	Electronic Power Supply in NEMA3R Enclosure	96W / 1X4A**				
<b>DEL-X-240-2-4-24<sup>1</sup></b>		192W / 2X4A**				
<b>DEL-X-320-3-4-24<sup>1</sup></b>		288W / 3x4A**				
<b>DEL-120-1-4-24<sup>1</sup></b>	Electronic Stand Alone	96W / 1X4A**			UL/CE	2.67"W X 9.66"L 1.53"D

<sup>1</sup> Interface sold separately

\* Dimensions include enclosure with mounting bracket

\*\* 4A maximum current protection for each secondary circuit

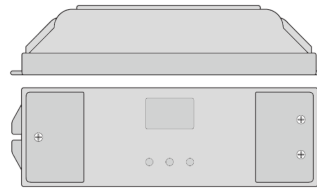
\*\*\* Constant voltage drivers 50HZ , voltage regulated with short circuit protection. operating temperature -40 C- 80° C



Electronic Driver



Electronic Driver  
in Enclosure



ZXC-DMX  
RGB Dimming Interface

## Interface

Product Code	Application	Voltage	Type	Listing	Dimensions
<b>ZXC-DMXW</b>	Indoor	24V DC	RGB, RGBW or RGB+W Interface	cULus	6.60"L X 2.00"W X 0.87"D

## Wall Touch Controller (Optional)

Product Code	Type	Application	Voltage	Listing	Dimensions	Number of DMX Channels	Number of areas	Number of scenes
<b>TGDMXSLES AU9</b>	Stand Alone DMX Programmable Controller with Easy to Use Software Interface	Indoor	5.5V DC	ETL, UL	5.30"W X 5.50"H X 1.90"D	256	1	20



Slesa U9 Controller

System Layout Example Diagram

