

# TARGETTI

## KEPLERO WALL WASHER

Professional Inground LED Fixture

**Concept:** Single COB LED inground wall washer.

**Housing:** 8" tall x 11" diameter die-cast aluminum housing.

**Materials:** Anodized and powder coated black die-cast aluminum heat sink with PVC installation sleeve and stainless steel (AISI316L) trim ring with extra clear glass (anti-slip available).

**Trim:** Ultra flat round decorative ring, with beveled edge in brushed natural or bronze finishes. Features tamper-proof Torx screws.

**Optic:** Wall Wash 106° x 66° optical unit includes acrylic lens, a high reflectance asymmetrical anodized aluminum reflector and integral holographic filter for even illumination of vertical surfaces as well as excellent light diffusion at ground level. This unique reflector system allows the Keplero Wall Wash fixtures to be installed at an unparalleled 2:1 ratio for completely uniform illumination on the vertical surface.

**Mounting:** Flush and semi-flush installation sleeves with stainless steel extension sleeve or optional raised installation tube for landscape. Fixture includes screw down holes and stainless steel screws for attachment to installation sleeve. Includes optional stainless steel L brackets for mounting support. Installation sleeve required for flush or semi-flush mounting (sold separately).

**Driver:** Integrated universal voltage IP68 electronic driver complete with watertight IP68 connector cable. (0-10V dimming available).

**Installation:** Fixture flush mount installation includes 9" tall x 11" diameter sleeve, extension sleeve for wire slack and accessibility. Fixture is provided with 6ft IP68 connector cable, direct burial brass ingrade jbox (required, sold separately).

**Wattage:** 37W

**Color Temperature:** 3000°K / 4000°K

**CRI:** 84 CRI

**Lumen Maintenance (L70):** 50,000hrs

*Calculation for LED fixtures are based on measurements that comply with IES LM-80.*

**Voltage:** Universal Voltage 120-277V AC 50/60Hz

**IP:** IP68\*\*, IP69\*

**Load Rating:** Resistant to static loads up to 20KN in flush mounted cement and pavement installations.

**Certifications:** cULus listed Wet Location

Tested in accordance with LM-79-08

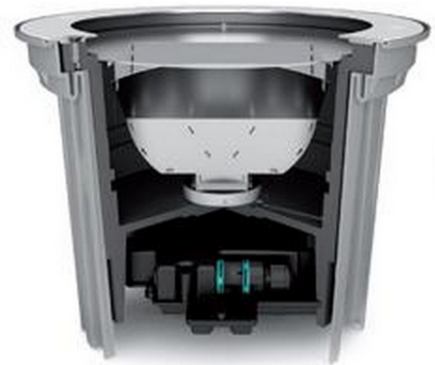
**Warranty:** 5 year limited warranty

\* Up to 1 METER DEPTH of water for up to a maximum of 30 MINUTES

\*\* Not suitable for submersible installations



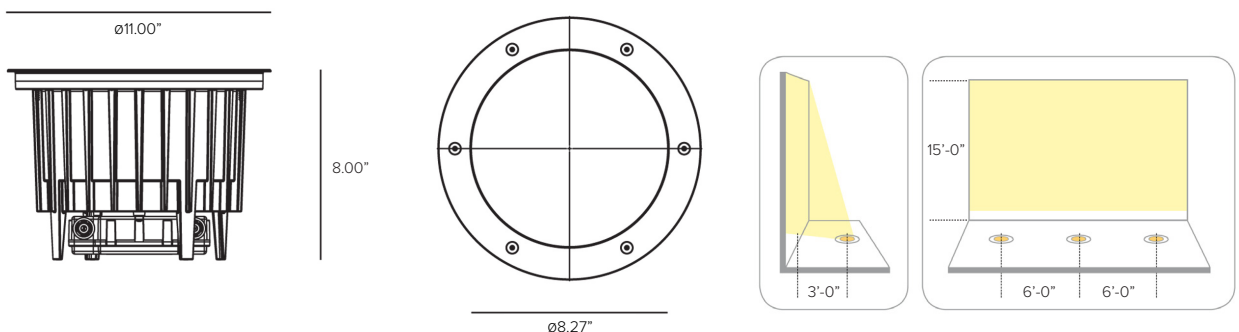
KEPLERO® Wall Washer with Clear Lens



**Lumens:**            **3000K**    **4000K**  
 Wall Wash = 1793Lm    1847Lm

PRODUCT CODE	DRIVER	TYPE	WATTAGE	COLOR TEMP	+	TRIM & INSTALLATION
KPL — KEPLERO	ND — Non Dimming	WW — Wall Wash	L2 — 37W	30 — 3000K		Required (See Pg 2)
	10 — 0-10V Dimming			40 — 4000K		

### Views



# TARGETTI

## KEPLERO WALL WASHER

TRIM RING (REQUIRED) - CHOOSE 1	
<b>1E2325</b>	Round Decorative Brushed Stainless Steel Ring with clear glass (Stainless Steel AISI316L)
<b>1E2325A</b>	Round Decorative Brushed Stainless Steel Ring with Anti-Slip Glass (Stainless Steel AISI316L)
<b>1DU2325B</b>	Round Decorative Bronze Trim Ring with clear glass (Stainless Steel AISI316L)
<b>1DU2325BA</b>	Round Decorative Brushed Trim Ring with Anti-Slip Glass (Stainless Steel AISI316L)

INSTALLATION SLEEVE (REQUIRED) - CHOOSE 1	
<b>1DU2394</b>	9" Installation sleeve for flush finish with 4.5" aluminum extension sleeve
<b>1DU4343</b>	Stainless steel raised installation sleeve 36" Black (Field cuttable to 23" above ground) with 9" installation sleeve

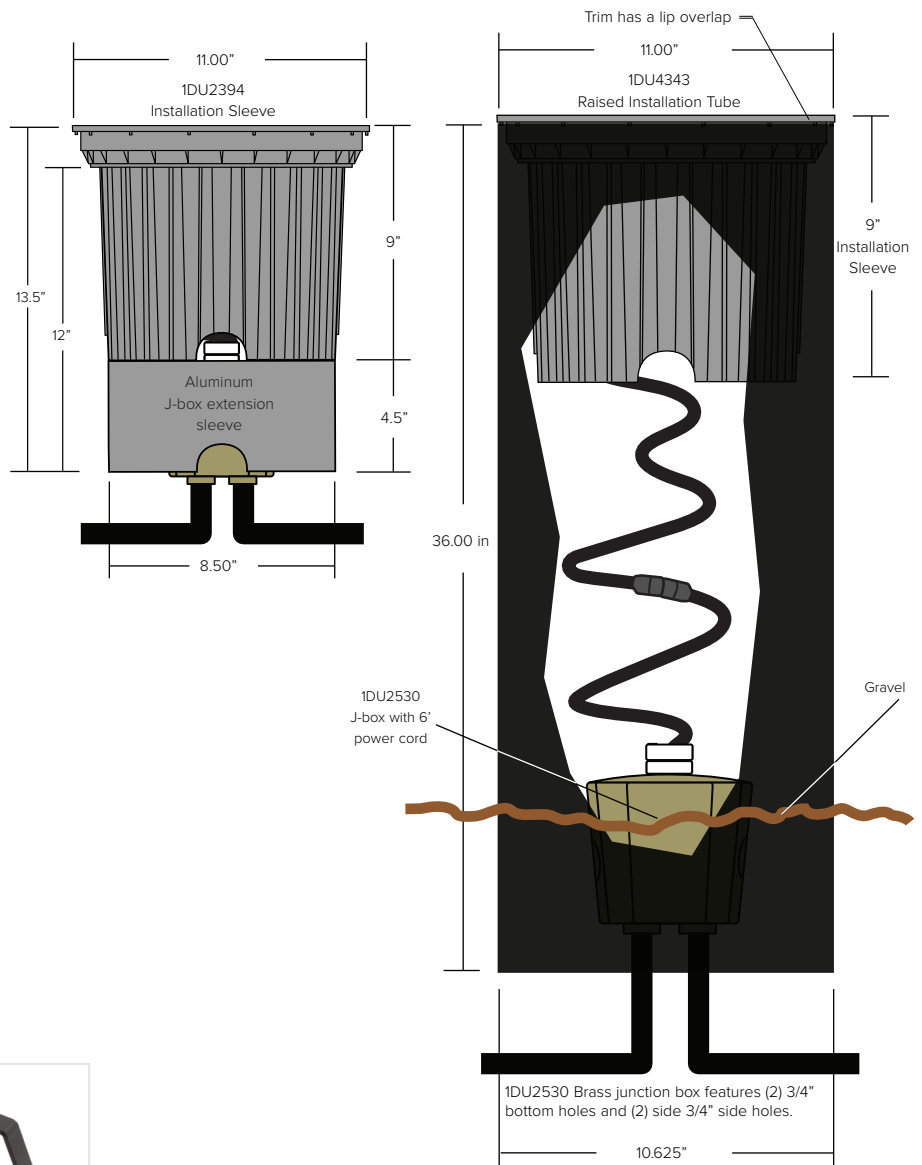
INSTALLATION ACCESSORIES	
<b>1DU2530</b>	Direct burial brass ingrade jbox <b>(REQUIRED one per fixture)</b>
<b>1E2495</b>	Anti-vandal torx key - Suggested one per 5 fixtures
<b>1E2496</b>	Fixture maintenance removal handle - Helpful one per 10 fixtures
<b>1E0388</b>	Glass removal tool - Helpful one per 20 fixtures



1E2495 Anti-vandal torx key



1E2496 Fixture maintenance handle



# TARGETTI

## KEPLERO WALL WASHER

### Photometrics

