

TARGETTI

CHIODINO

Professional Pathway LED Bollard

Concept: Radial-emission LED bollard.

Housing: Tapered, anodized body and die-cast anodized head, both powder coated with ferrite finish.

Materials: Powder coated in ferrite finish anodized extruded aluminum.

Optic: Cusp reflector made of matt finish aluminum. Ultra flat, transparent, polycarbonate protection screen.

Mounting: Complete with AISI 316L stainless steel base and stainless steel vandal-proof screws (special wrench included). The fixture can be supplied with a special AISI 316L stainless steel surface installation plate powder coated with Ferrite Grey finish.

Installation: Pre-cabled with 10' Belden direct burial 18ga 2 Conductor Cable for Connection to remote power supply. Fixture is provided with 6ft IP68 connector cable, direct burial brass ingrade jbox (required, sold separately).

Driver: Remote Class II 24V Electronic Power Supply (required, sold separately).

Finish: Ferrite Grey

Wattage: 14W

Color Temperature: 3000°K

Voltage: 24V DC

Lumens: 1200Lm

Lumen Maintenance (L70): 50,000hrs

Calculation for LED fixtures are based on measurements that comply with IES LM-80.

CRI: 84

BUG: B1-U0-G0

Distribution: Type V with optional shutters for 90°, 180°, or 270° distribution

IK Rating: IK10

IP Rating: IP65

Certifications: cULus Class II listed Wet Location

Tested in accordance with LM-79-08

Warranty: 5 year limited warranty



Shown with 90°
Shutter Option



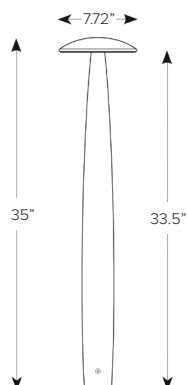
Shown with 180°
Shutter Option



Shown with 270°
Shutter Option

PRODUCT CODE	DRIVER	WATTAGE	COLOR TEMP	CRI	VOLTAGE	+	INSTALLATION	+	POWER SUPPLY
CHI — CHIODINO	RP — Remote Power	L1 — 14W	30 — 3000K	84 — 84 CRI	24 — 24VDC		Required (See Pg 2)		Required (See Pg 2)

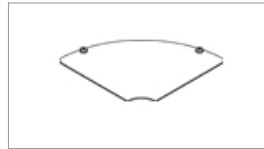
Views



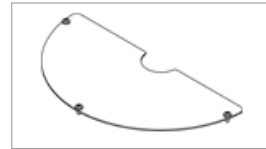
TARGETTI

CHIODINO

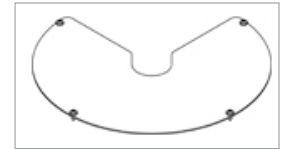
ACCESSORIES	
1E2970	90° shutter, emission 270°
1E2971	180° shutter, emission 180°
1E2972	270° shutter, emission 90°



1E2970 90° Shutter

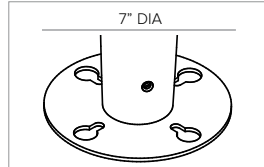


1E2971 180° Shutter

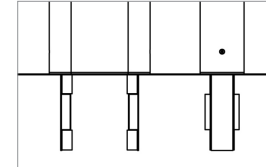


1E2972 270° Shutter

MOUNTING (REQUIRED) - CHOOSE 1	
1E2969Z01	Mounting Plate for installing in the ground. Powder coated ferrite finish 316L grade stainless steel. Compatible with 3/8" fixing rods.
CONSULT FACTORY	Concrete anchor for flush mounting with remote j-box.

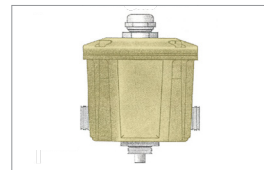


1E2969Z01 Mounting Plate



Ground Anchor

INSTALLATION (REQUIRED)	
1DU2530	Direct burial brass ingrade jbox (REQUIRED)
1E2495	Tool - Torx head TX30



1DU2530



1E2495

Power Supplies (REQUIRED)

Power Supplies	Type	Max Fixtures Per Driver	Wattage	Voltage	Dimmability	Listing	Dimensions
DEL-X-120-1-4-24	Electronic Power Supply in NEMA3R Enclosure	6	96W / 1X4A**	90-305V AC / 24V DC	Non-Dimmable	cULus	12"W X 12"L 4"D*
DEL-X-240-2-4-24		12 <i>two rows of 6ea</i>	192W / 2X4A**				
DEL-X-320-3-4-24		18 <i>three rows of 6ea</i>	288W / 3x4A**				
DEL-LPF-25-24 ¹	Electronic Stand-alone IP67 <i>(Listed Enclosure Provided by Others)</i>	1	25W / 1x1A**		UR Class II	2.67"W X 9.66"L 1.53"D	
DEL-120-1-4-24 ¹	Electronic Stand-alone <i>(Listed Enclosure Provided by Others)</i>	6	96W / 1X4A**				
DEL-X-120-1-4-24-D	Electronic Power Supply in NEMA3R Enclosure	6	96W / 1X4A**		Integral 0-10V Dimming Interface	cULus	12"W X 12"L 4"D*
DEL-X-240-2-4-24-D		12 <i>two rows of 6ea</i>	192W / 2X4A**				
DEL-X-320-3-4-24-D		18 <i>three rows of 6ea</i>	288W / 3x4A**				

¹ Installation of transformer must be compliant to Class II installation standards. Refer to NEC and local building code requirements.

* Dimensions include enclosure with mounting bracket.

** 4A maximum current protection for each secondary circuit.

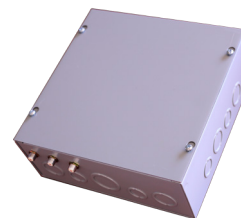
*** Constant voltage drivers 50/60HZ, voltage regulated with short circuit protection. Operating temperature -40 C- 80° C.

Electronic Drivers

For use with or without 0-10V interface (DLD-1-10) for secondary side dimming control. Generally used for programmable dimming levels for changing scenarios.



Electronic Stand-alone Driver

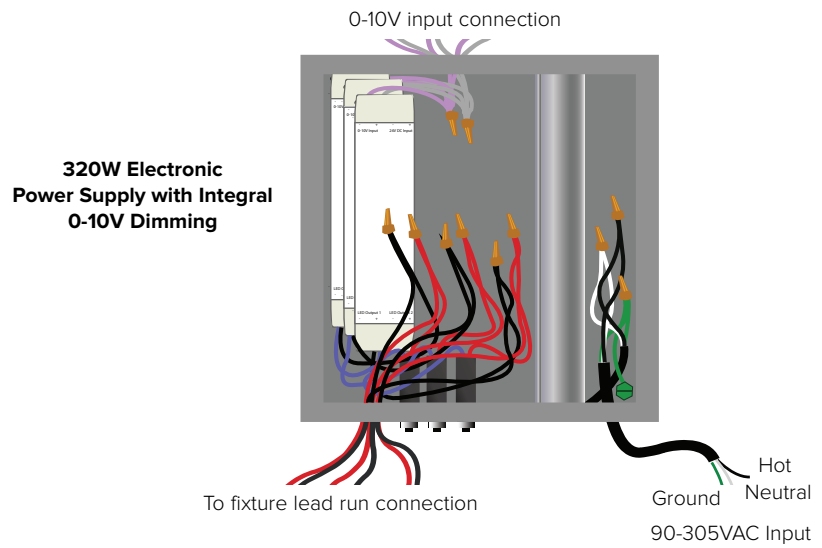
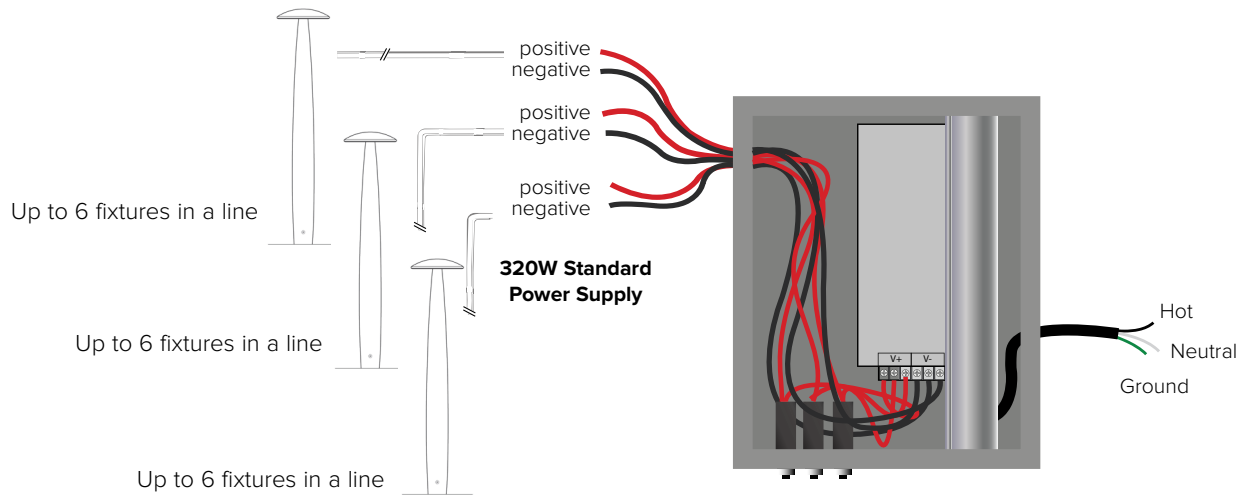


Enclosure with Electronic Driver

TARGETTI

CHIODINO

System Layout Example Diagram



TARGETTI

CHIODINO

Photometrics

