



DURALUM™

IP66 OUTDOOR LINEAR STRAND

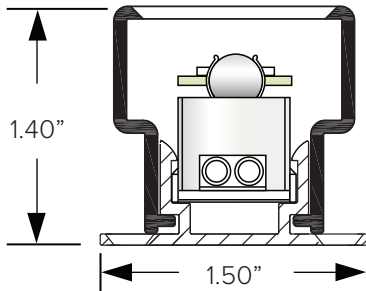
Key Features

- Critical neutral to warm white color applications within +/-50°K, recommended for indirect illumination of interior coves, niches, toe kick and cabinetry with high CRI illumination on color or white backgrounds up to 5 feet high
- Flexible field cuttable dual wire system housed within an IP67 outdoor rated channel and lens cover for outdoor cove and niche applications
- Custom model series LED modules create high CRI illumination at up to over 340 Lumens per foot
- Low maintenance, energy efficient lighting for high or low ambient light interior applications
- Multiple dimming options available

High Output Linear LED Strand
Adjustable multiple array LED modules in an outdoor system for directional control of premium color illumination.



Dimensional Drawings



Details

- Spacing** 2.4" OC Spacing
- LED PCB** Replaceable SMD LED modules with 6 LED array with snap-in cap connection for rotational adjustability
- Adjustability** Factory pre-adjusted to 120°
- Colors** 2200°K, 2700°K, 3000°K, and 3500°K
- MacAdam Ellipse** Advanced LED binning with +/- 2-step MacAdam ellipse
- Mounting** Aluminum linear mounting channel mounts with screws (by others (6 per foot) for linear outdoor applications
- Lens** Linear lens mounts in channel to protect LEDs from direct contact and create a maintainable dust cover
- Max run length** 75 LED PCBs per 4A class II circuit
- Listing** cULus / CE listed
- Compliance** ROHS compliant
- Warranty** 3 year warranty

Product Specification Guide

Spacing	Watts per foot	Product max run limitations (Ft/W/LED's)
2.4" OC	5.60W/ft	15' / 75 PCB's per 4A Class II circuit

LED Data

Model	Wattage	Lifespan at 90% drive
DuraLum Series LED module with 6 SMD LEDs	0.9 per PCB	60,000hrs

* LEDs operating at 90% of LED manufacturers maximum current rating.

Fixture Data

Model	Efficacy* Lm/Wt	CRI	Lm/Ft	Lm/Module	Wt/Ft
DuraLum Outdoor					
2200°K at 2.4" OC	49.03	85.2	220.64	68.43	4.50
2700°K at 2.4" OC	57.03*	84.6	256.65	76.17	4.50
3000°K at 2.4" OC	60.11*	83.5	270.51	54.00	4.50
3500°K at 2.4" OC	64.24*	84.8	289.07	83.74	4.50

* Meets Title 24 High efficacy rating.

Ordering Guide

PRODUCT CODE	LED SPACING	COLOR TEMP	OUTPUT	LENGTH	LENS	VOLTAGE	+	WIRING	+	POWER SUPPLY
DRO — DuraLum™ Outdoor	24 — 2.4" OC	22 — 2200°K 27 — 2700°K 30 — 3000°K 35 — 3500°K	SO — Standard Output	2 — 2ft 4 — 4ft 6 — 6ft 8 — 8ft	C — Clear	24 — 24VDC				

Wiring



DRL-TERM-BLK

Duralum terminal block available separately. Accepts AWG #10, 12 or 14 wire.

Power Supply

Product Code	Type	Wattage	Voltage	Dimmability	Listing	Dimensions
DEL-X-120-1-4-24	Electronic Power Supply in NEMA3R Enclosure	96W / 1X4A**	90-305V AC / 24V DC	Non-Dimmable	cULus	12"W X 12"L 4"D*
DEL-X-240-2-4-24		192W / 2X4A**				12"W X 12"L 4"D*
DEL-X-320-3-4-24		288W / 3x4A**				12"W X 12"L 4"D*
DEL-120-1-4-24	Electronic Stand Alone	96W / 1X4A**			UL/CE	2.67"W X 9.66"L 1.53"D
DEL-X-120-1-4-24-D	Electronic Power Supply in NEMA3R Enclosure	96W / 1X4A**		Integral 0-10V Dimming Interface	cULus	12"W X 12"L 4"D*
DEL-X-240-2-4-24-D		192W / 2X4A**				12"W X 12"L 4"D*
DEL-X-320-3-4-24-D		288W / 3x4A**				12"W X 12"L 4"D*
DMG-40-1-1.6-24-D	Magnetic Dimmable in NEMA3R Enclosure	40W / 1X1.6A**	120V AC / 24V DC	Triac or MLV	cETLus	2.00"W X 5.06"L 2.14"D
DMG-60-1-2.4-24-D		60W / 1X2.4A**				2.25"W X 6.55"L 2.55"D
DMG-120-1-4-24-D		96W / 1X4A**				3.00"W X 9.80"L 3.00"D
DMG-192-2-4-24-D		192W / 2X4A**				3.00"W X 9.80"L 3.00"D

* Dimensions include enclosure with mounting bracket

** 4A maximum current protection for each secondary circuit

*** Constant voltage drivers 50HZ, voltage regulated with short circuit protection. operating temperature -40 C- 80° C

Electronic Drivers

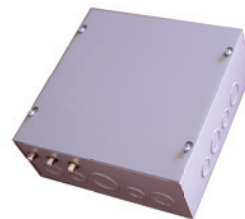
For use with or without 0-10V interface for secondary side dimming control. Generally used for programmable dimming levels for changing scenarios.

Magnetic Transformers

For use with primary side dimming with an MLV forward phase dimming system (supplied by others). Generally used for a pre-set dimming level.



Electronic Driver Standalone



Electronic Driver in Enclosure



Magnetic Transformer

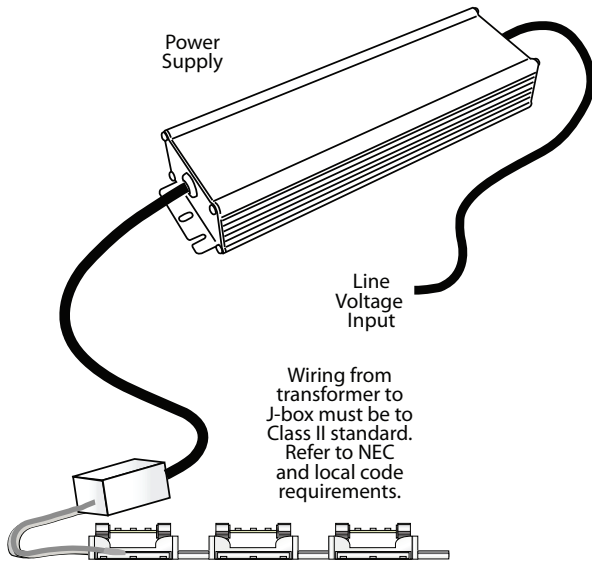
Dimmer (Optional)

Product Code:	Type	Max Load	Voltage	Dimensions
D-MG-600	Magnetic	450W	120VAC/120VAC	Single Gang Box - Recessed
D-MG-1000		800W	120VAC/120VAC	Dual Gang Box - Recessed

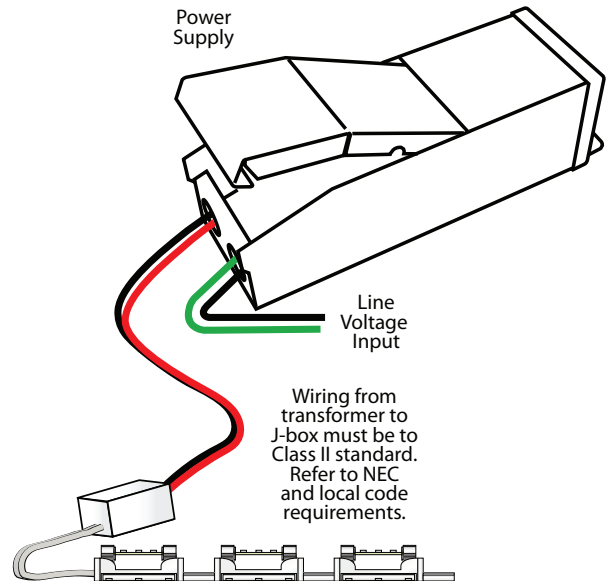


DM-G
Single Gang
Dimmer

Electronic Driver

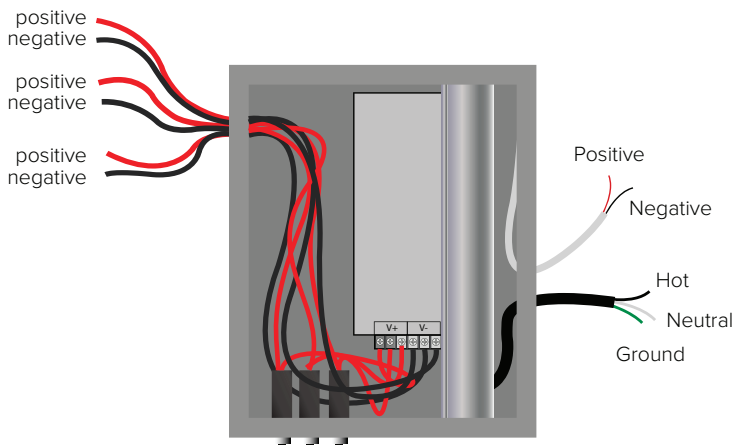


Magnetic Transformer



System Layout Example Diagram

Standard Power Supply



Electronic Power Supply with integral 0-10V Dimming

